

Commune Doctorum Ecclesiae

#vim, AM 981

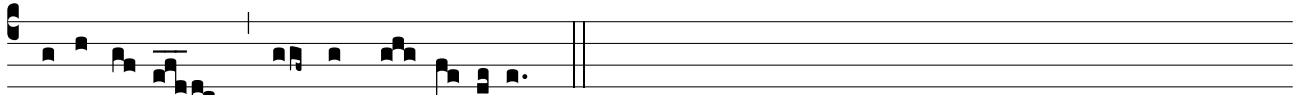
ad Magn.

IV^e

S



Api- énti- am * Sanctó-rum nar-rant pó-pu-li, et laudes e- ó-rum



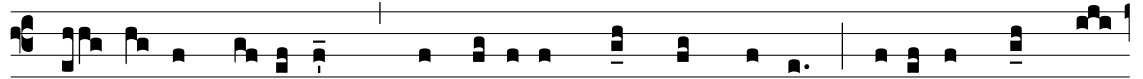
pronúnti- at omnis ec-clé-si- a.-

#vm, AM 665

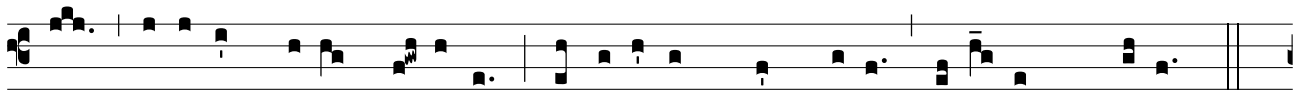
ad Magn.

II^d

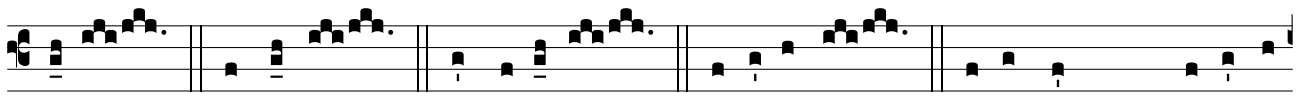
O



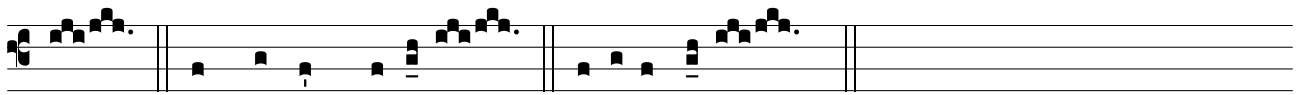
Doctor óptime, * Ecclé-si-ae sanctae lumen, be- á-te N., *



di-vinae le-gis amá-tor: deprecá-re pro nobis Fí- li- um De- i.



Beda Albérte Athaná-si Hie-rónyme Jo- ánnes Chry sósto-



me Alphonse Ma-rí- a Bonaventúra-